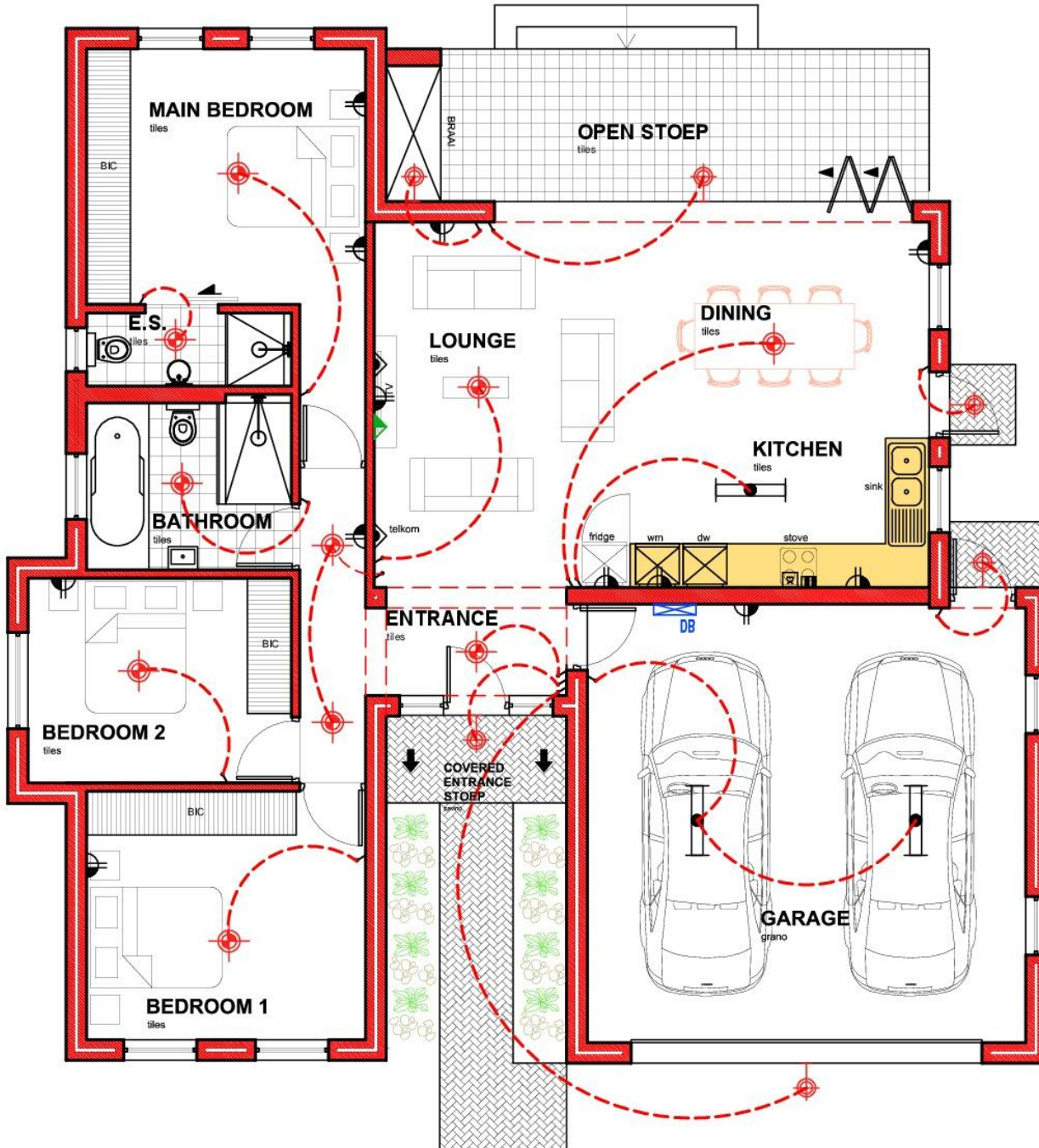


TYPE 9B



SYMBOL DESCRIPTION	
	LIGHT SWITCH
	TWO WAY LIGHT SWITCH
	PENDANT / CEILING MOUNTED LIGHT FITTING
	WALL MOUNTED LUMINAIRE (2400mm AFFL)
	DISTRIBUTION BOARD
	900mm FLUORESCENT LIGHT
	DOUBLE SOCKET 15 AMP
	TELEPHONE POINT
	TV POINT
	OVEN POINT
	EXTRACTOR